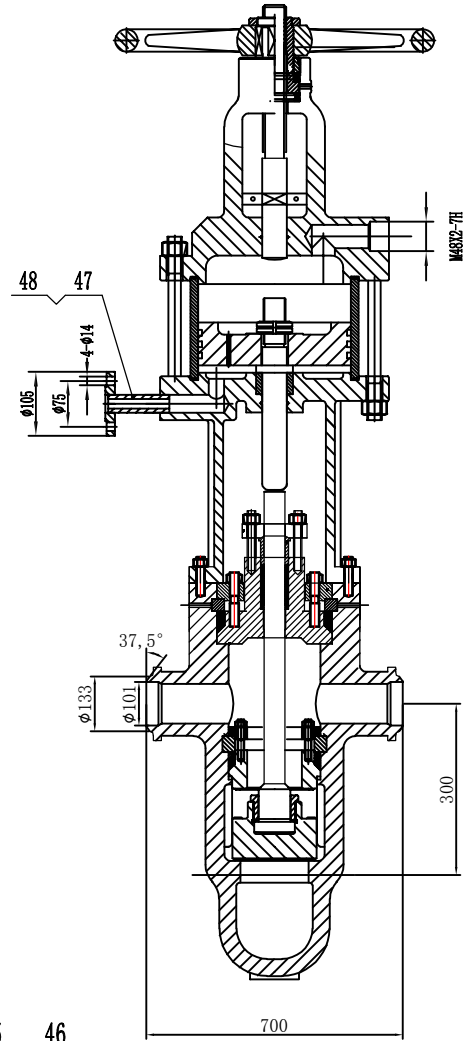
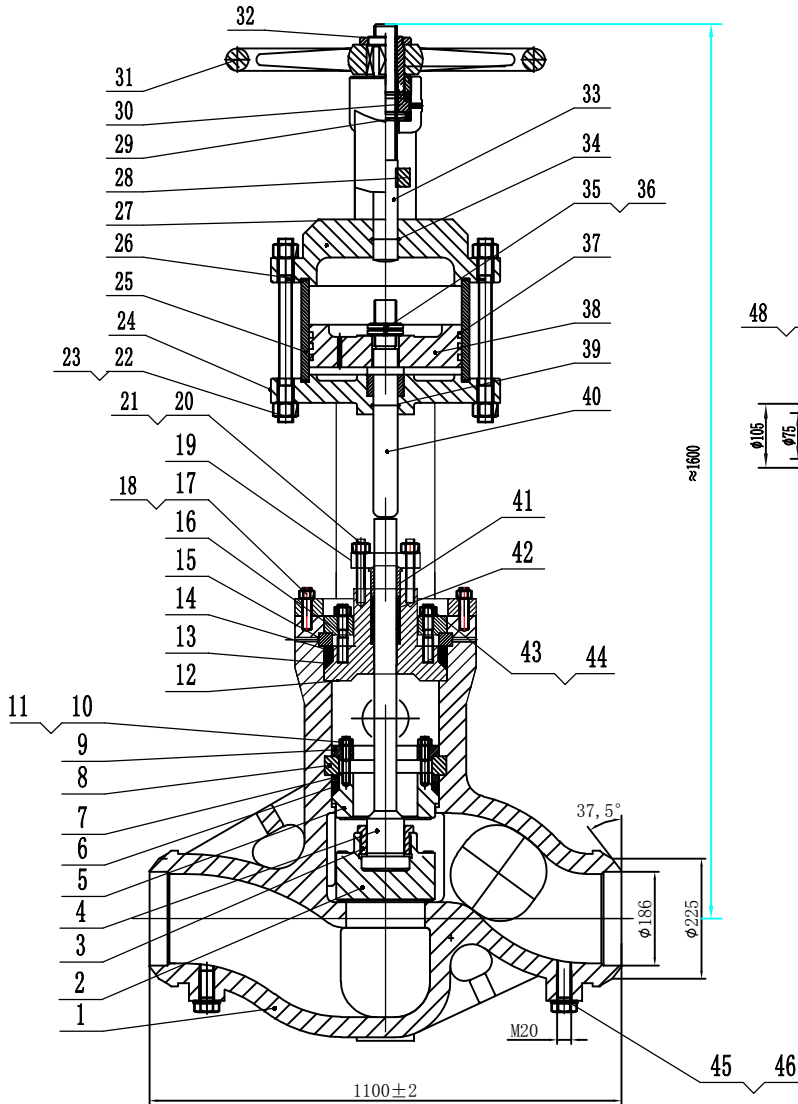


Performance Specifications				
Nominal Pressure (PN)	20.0	MPa		
Shell Test	30.0			
Seat Test	22.0			
Backseat Test	22.0			
Operating Temperature	<200℃	Working Pressure	20.0	
	<425℃	Pressure	10.98	
Applicable Media: Water, Steam, Oil Products				

Technical Requirements

- 1.Design and manufacturing standard: In accordance with NB/T 47044-2014.
- 2.Face-to-face dimensions: As per manufacturer's standard.
- 3.Testing and inspection standard: In compliance with NB/T 47044-2014.
- 4.Weld end preparation: According to NB/T 47044-2014.
- 5.Nozzle dimensions: As per customer-supplied nozzle dimensions.



24	Bracket	WCB	48	Flange DN20-PN25	A1035
23	Hex Nut	A194 2H	47	Outlet Pipe	WCB
22	Stud Bolt	A1035	46	Plug W20	A1035
21	Hex Nut	A194 2H	45	Plug Gasket	Copper (Cu)
20	Double-End Stud	A193 B7	44	Hex Nut	A194 2H
19	Gland Plate	A1035	43	Equal-Length Stud	A193 B7
18	Hex Nut	A194 2H	42	Packing	Graphite
17	Double-End Stud	A193 B7	41	Gland Bush	A182 F6a
16	Clamp Plate	A1035	40	Piston Rod	A182 F6a
15	Split Ring (6-Piece)	A1035	39	O-Ring	Nitrile Rubber
14	Spacer Ring	A1035	38	Piston	HT200
13	Sealing Ring	Graphite	37	O-Ring	Nitrile Rubber
12	Self-Sealing Bonnet	A105	36	Washer	65Mn
11	Hex Nut	A194 2H	35	Round Nut	A1035
10	Double-End Stud	A193 B7	34	O-Ring	Nitrile Rubber
9	Clamp Plate	A1035	33	Upper Stem	A182 F6a
8	Split Ring (4-Piece)	A1035	32	Locking Cap	A1035
7	Spacer Ring	A1035	31	Handwheel	KTH-330-08
6	Sealing Ring	Graphite	30	Stem Nut	H59
5	Seat Ring	A105+STL	29	Bearing	ASTM 51200
4	Lower Stem	A182 F6a	28	Clamping Plate	A1035
3	Disc Cover	A1035	27	Bracket 1	WCB
2	Disc	A105+STL	26	Jacketed Gasket	Graphite
1	Valve Body	WCB+STL	25	Cylinder Body	Graphite

Serial No.	Name	Material	Serial No.	Name	Material
Volume		Wooden case: 1890LX1190WX900H	Power-Station Purpose		
Weight		Main shaft: 550KG	Inlet Valve		
			J761Y-250C-DN175		
		Drawing	Auditing		DN175-PN250
		Approve	Date		Assemble Drawing